

Power supply 3 Output : 5V/10V/24V/48V/110Vdc, 115Vdc, 125Vdc, 127Vdc KPS-RSo3 AC-DC ou DC-DC up to 1500W

Description:

Industrial high-power supply – robust, configurable, and fully protected
Designed to meet the highest requirements of industrial and energy sectors, our power supply offers a reliable, flexible, and durable solution.

- Fully configurable on request: voltage, current, connectors, form factor...
- Full protection: against overloads, short circuits, overvoltage, and excessive temperatures
- Industrial-grade robustness: guaranteed operation in the most demanding environments
- Applications: industrial automation, energy systems, photovoltaic, wind power, critical equipment...
- Optimize your installations with a custom-built power supply designed to last.
- Contact us for a personalized assessment.



High-performance switched-mode power supply – compact, efficient, and scalable
Optimize your systems with our high-power-density switched-mode power supply, designed for maximum performance without excessive heating.

- High efficiency: optimized electronics for minimal thermal dissipation
- Custom output voltages, including symmetrical or non-standard voltages
- Increased output currents tailored to your needs

With full flexibility, easy integration, and excellent energy efficiency, this power supply is the ideal solution for your industrial, energy, or advanced power-conversion applications.

Specifications:

Input :

-18...72Vdc, 40Vdc ...160Vdc ,
120...340Vdc 200Vdc...1500Vdc

-85 à 230V monophasé
-380/400V Triphasé

Up to 3 output available :

-5V/10V/24V/48Vdc / 110Vdc , 115Vdc ,
125Vdc , 127Vdc
- Fully protected: short circuit, overload, thermal

Power :

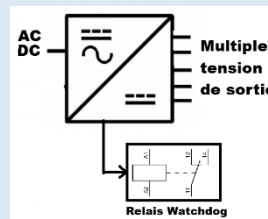
-3000W max for 1 output

Option :

- DIN rail, surface-mount or base-mount installation
- Watchdog relay for output voltage monitoring
- Output diode for parallel operation



Synoptique :



Design:

Engineered to last — an industrial power supply built for real-world environments

Our power supply integrates seamlessly into your installations thanks to its robust, reliable, and field-oriented design:

- DIN-rail or wall mounting for easy integration
- Fixed terminal block connectors up to 16 mm², depending on output current
- Black aluminum enclosure, both elegant and durable
- IP20 protection rating
- Excellent resistance to vibration and shock
- Low sensitivity to humidity and dust

Maximum protection and longevity

- Protection against overloads, permanent short circuits, and overheating (automatic output power limitation)
- Intelligent cooling with power-regulated ventilation, ensuring extended fan lifetime
- Integrated EMC filtering, compliant with EN55022 Class A

A reliable power supply designed for demanding environments, with no compromise on safety or durability.

Version Option	
KPS_series /HT	High-temperature version (-25°C à 75°C)
KPS_series /NV	Natural convection (-25°C à 60°C)
KPS_series /D	Internal diode for parallel connection
KPS_series /POT	Adjustable output voltage

For safety reasons, the following requirements must be observed:

- Install the unit inside a protective enclosure compliant with current electrical safety standards.
- Use cables with an appropriate cross-section to connect the inputs and outputs.
- Primary-side protection with a fuse is recommended.
- Ensure the power supply is positioned to allow proper airflow for optimal ventilation.

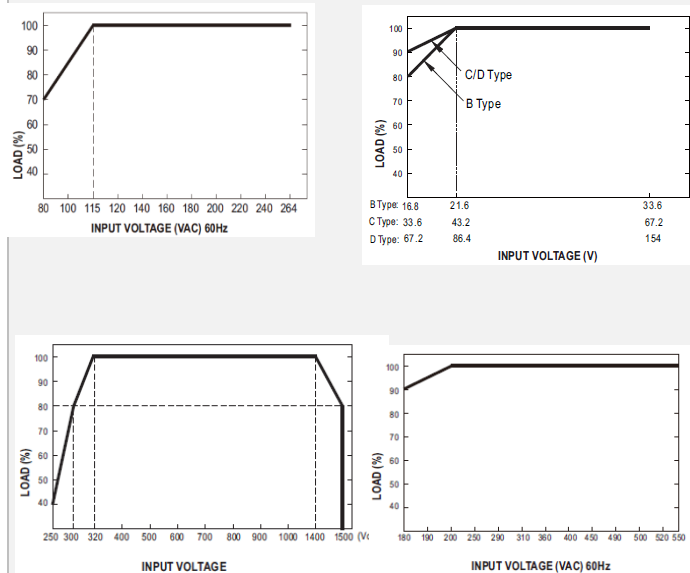
Technical specifications:

KPS_series	
Typical supply voltage	85 à 230VAC / 380/400V triphasé
Maximum supply voltage	200 ... 1500Vdc
Inrush current	60A typique
Typical efficiency	>90%
Input frequency	DC ou de 47hz à 440hz
Output adjustment accuracy	+/-2% max
Output regulation	+/-2% max
Line regulation (input variation)	+/-0.5%
Output ripple	< 1% max (limité à 20MHz)
Temperature stability	+/-0.02%/°C typique
Protection	court-circuit continue , redémarrage automatique
Overload protection	110% à 140% du courant nominal
Switching frequency	60kHz typique
Output hold-up time	50ms typique
Isolation voltage	2500Vac (entrée / sortie) 1500Vac (entrée / terre) 500Vac (sortie / relais watchdog) 500Vac (sortie / terre)
Relay Watchdog	Selon modèle et tension utiliser dans l'application

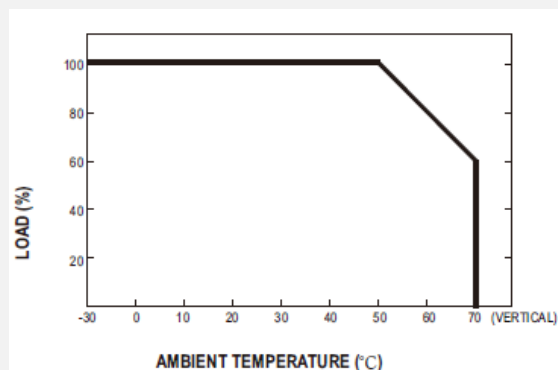
Environnement	
Weight	~3.5 à 4kg
Dimensions	~130mm (L) x 200mm (H) x 300mm de profondeur (ou 200mm) -Version Large 175mm x 200x 200mm ou 300mm de profondeur
MTBF (+25°C)	350 000 H (Hors FAN)
Lifetime	100 000H
Storage temperature	-40° à +85°C
Humidity (non-condensing)	~85%

Electromagnetic compatibility 2014/30/UE / Low Voltage Directive 2014/35/UE Immunity standard for industrial environments EN 61000-6-2	
ESD	EN61000-4-2
Radiated Susceptibility	EN61000-4-3
EFT/Burst	EN61000-4-4
Surge	EN61000-4-5
Conducted	EN61000-4-6
Magnetic Field	EN61000-4-8
Voltage Dips and interruptions	EN61000-4-11
EMC EMISSION	EN55011 Group1 Class A

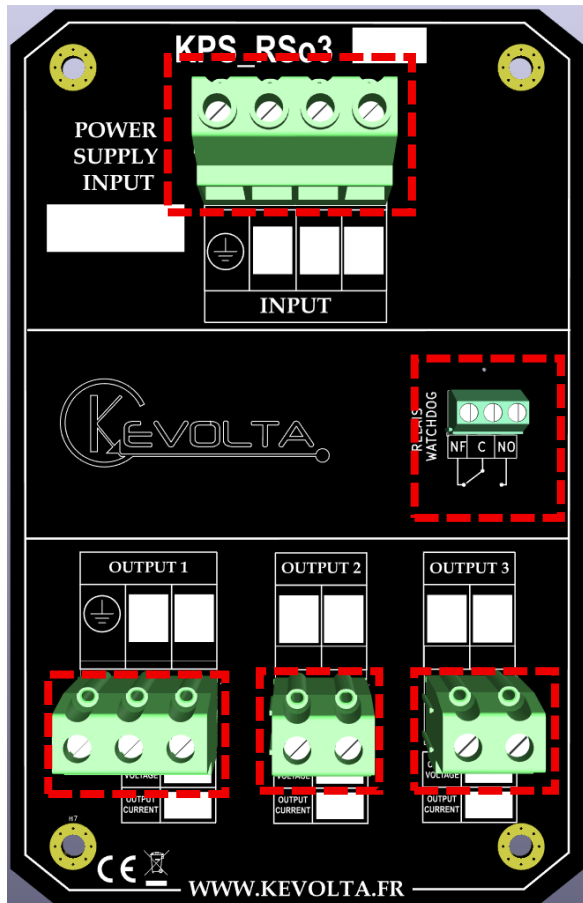
Output power characteristics according to input voltage:



Output power characteristics according to ambient temperature:



Connections :



Power terminal block according to input voltage

PIN 1	TERRE (ground)
PIN 2	L1 (Triphasé)
PIN 3	L2 (Triphasé) / N (Monophasé)
PIN 4	L3 (Triphasé) / L (monophasé)

Option Relais Watchdog

PIN 1	NF (fermé)
PIN 2	Commun
PIN 3	NO (ouvert)

terminal block Output 1

PIN 1	TERRE (ground)
PIN 2	V+ (VCC)
PIN 3	V- (GND)

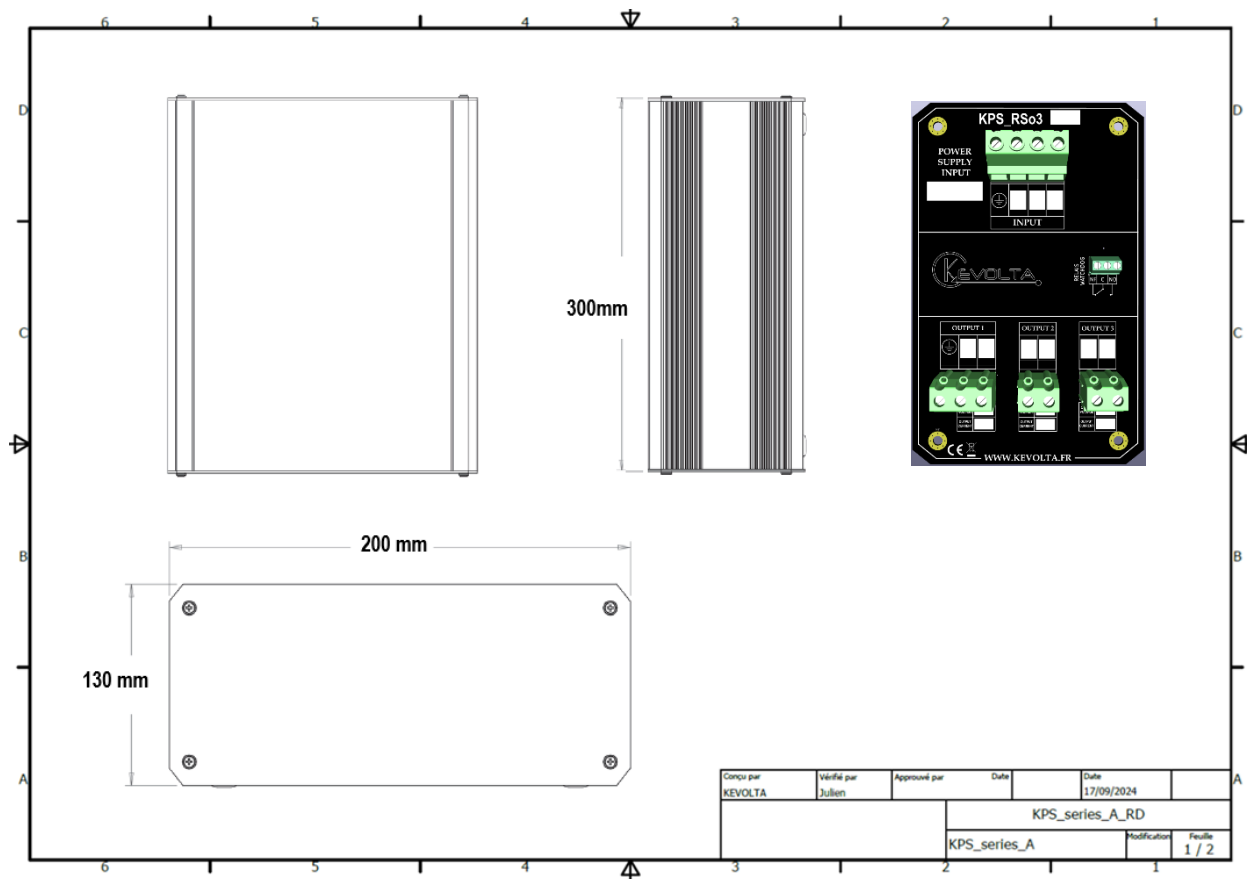
terminal block Output 2

PIN 1	V+ (VCC)
PIN 2	V- (GND)

terminal block Output 3

PIN 1	V+ (VCC)
PIN 2	V- (GND)

Dimensions : Version Normal130x200x200mm



Dimensions : Version Large 175x200x200mm

