

Power Supply Output : 110Vdc, 115Vdc, 125Vdc, 127Vdc

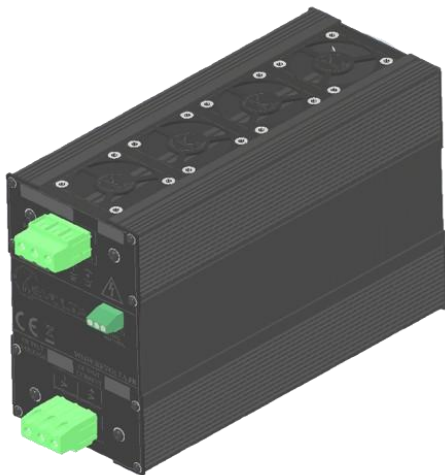
KPS-series AC-DC or DC-DC ou DC-AC up to 2500W

Description :

Industrial Power Supply – Robust, Configurable, and Fully Protected

Designed to meet the highest demands of industrial and energy sectors, our power supply provides a reliable, flexible, and durable solution.

- 1 to 6 isolated or common-ground outputs, tailored to your needs
- Fully configurable on request: voltage, current, connectors, format, etc.
- Complete protection: against overloads, short circuits, overvoltages, and excessive temperatures
- Industrial-grade robustness: guaranteed operation in the most demanding environments
- Applications: industrial automation, energy systems, photovoltaics, wind power, critical equipment, and more
- Optimize your installations with a custom-designed power supply built to last
- Contact us for a personalized study



High-Performance Switched-Mode Power Supply – Compact, Efficient, Scalable

Optimize your systems with our high power-density switched-mode power supply, designed to deliver maximum performance without excessive heating.

- High efficiency: optimized electronics for minimal thermal dissipation
- 1 to 6 isolated outputs: series or parallel coupling possible
→ Customized output voltages, symmetric or non-standard
→ Increased output currents according to your needs

With total flexibility, easy integration, and outstanding energy efficiency, this power supply is the ideal solution for industrial, energy, and advanced power conversion applications.

Features:

Input:

- 85...265Vac Single Phase
- 180...550Vac 2 ou 3 phase
- 9...36Vdc , 18...72Vdc, 40Vdc
...160Vdc , 120...340Vdc &
254...780Vdc
- 200Vdc...150Vdc

Output :

- 110Vdc , 115Vdc , 125Vdc , 127Vdc
- Fully protected : Short circuit, overload, thermal

Power :

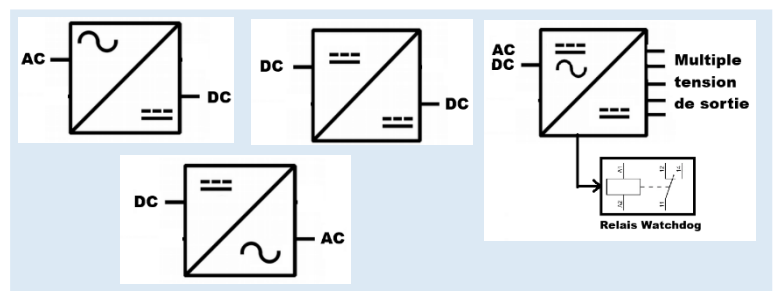
- 3000W max for one output
- 500W/output for version 5 outputs

Option :

- DIN rail, wall-mounted, or desktop installation
- Watchdog relay for output voltage monitoring
- Backup battery
- Output diode for parallel operation



Synoptic :



Conception :

Built to Last – An Industrial Power Supply Designed for Real-World Environments

Our power supply integrates seamlessly into your installations thanks to its robust, reliable, and field-oriented design:

- DIN rail or wall mounting for easy integration
- Fixed terminal block connectors up to 16 mm², depending on output current
- Elegant and durable black aluminum housing
- IP20 protection rating
- Excellent resistance to vibrations and shocks
- Low sensitivity to humidity and dust

Maximum Protection and Longevity

- Protection against overloads, permanent short circuits, and overheating (automatic output power limitation)
- Intelligent cooling with fan speed regulation based on power consumption, ensuring optimized fan lifetime
- Integrated EMC filtering, compliant with EN55022 Class A

A reliable power supply designed for demanding environments, without compromise on safety or durability.

Technical specifications :

| KPS_series | |
|---|---|
| Standard input Voltage | 85...265Vac / 100...370Vdc |
| High input voltage | 180...550Vac / 254 ...780Vdc |
| Inrush current | 60A typique |
| Typical efficiency | >90% |
| Input Frequency | DC or 47hz to 440hz |
| Accuracy of output setting | +/-2% max |
| Output regulation | +/-2% max |
| Line regulation (Output current change) | +/-0.5% |
| Output ripple | < 1% max (limited to 20MHz) |
| Thermal stability | +/-0.02%/°C typique |
| Protection | Continuous short circuit protected, automatic restart. |
| Overload protection | 110% à 140% of rating current |
| Switching frequency | 60kHz typique |
| Output hold time | 50ms typique |
| Isolation | 2500Vac (Input/output) 1500Vac (input / ground) 500Vac (output / relaisy watchdog) 500Vac (output / ground) |
| Relay Watchdog | Characteristics according to model |

| Version Option | |
|-----------------|--|
| KPS_series /HT | Version High température (-25°C à 75°C) |
| KPS_series /NV | Natural convection cooling (-25°C à 60°C) |
| KPS_series /D | Internal ORing diode for parallel coupling. |
| KPS_series /WD | Watchdog relay monitoring the voltage output |
| KPS_series /S | S1 à S6 number of output possible |
| KPS_series /BAT | Integreate battery |
| KPS_series /POT | Adjustable output |

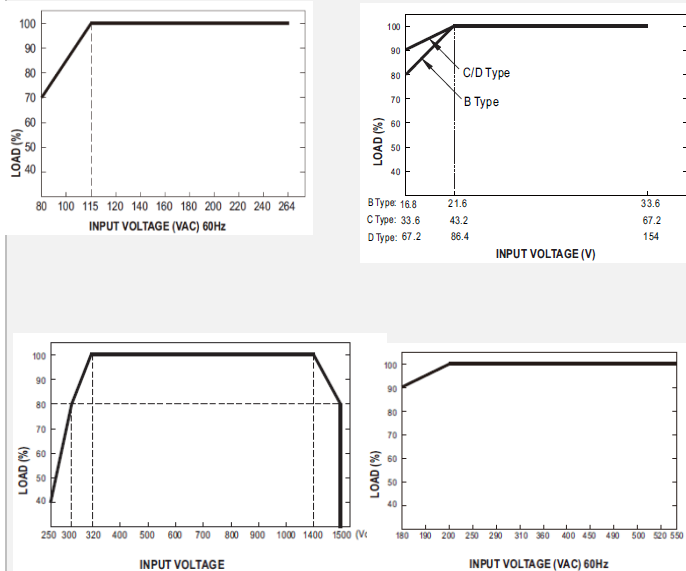
For safety reasons, please observe the following requirements :

- Mount the unit in a protective enclosure compliant with applicable electrical safety regulations.
- Use cables with an appropriate cross-section to connect inputs and outputs.
- Protect the primary side with a recommended fuse.
- Ensure proper positioning of the power supply to allow adequate airflow and optimal ventilation.

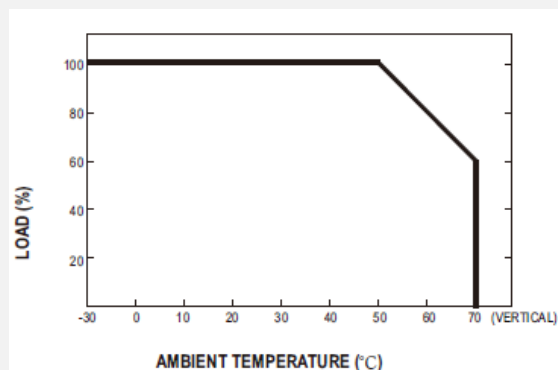
| Environnement | |
|--------------------------|--|
| Weight | ~3.5 à 4kg |
| Dimensions | ~102x160x Depth varies depending on the model, 120mm to 285mm) |
| MTBF (+25°C) | 350 000 H (Hors FAN) |
| Lifetime | 100 000H |
| Storage temperature | -40° à +85°C |
| Humidity (not condensed) | ~85% |

| Electromagnetic compatibility 2014/30/UE / Low Voltage Directive 2014/35/UE Immunity standard for industrial environments EN 61000-6-2 | |
|---|------------------------|
| ESD | EN61000-4-2 |
| Radiated Susceptibility | EN61000-4-3 |
| EFT/Burest | EN61000-4-4 |
| Surge | EN61000-4-5 |
| Conducted | EN61000-4-6 |
| Magnetic Field | EN61000-4-8 |
| Voltage Dips and interruptions | EN61000-4-11 |
| EMC EMISSION | EN55011 Group1 Class A |

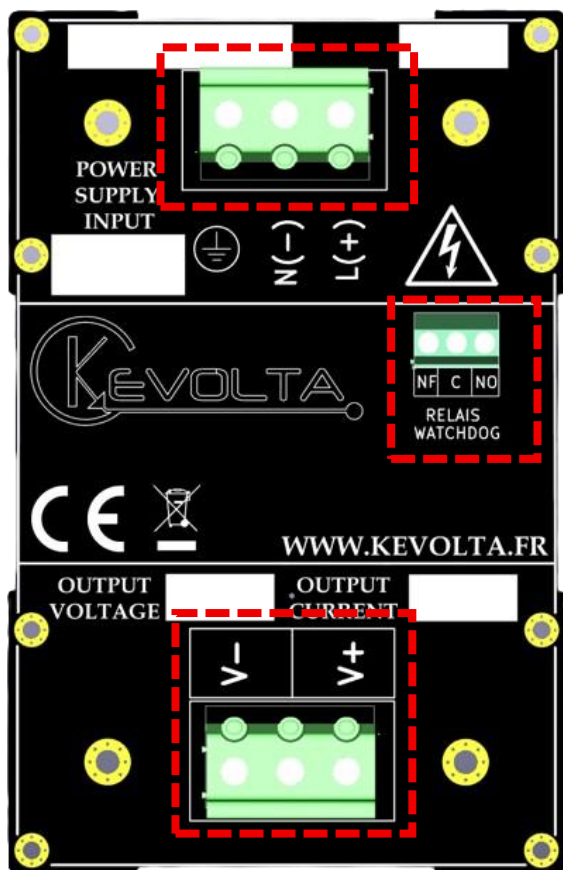
Output power ratings as a function of input voltage :



Output power ratings as a function of ambient temperature :



Connections :



Power Input Terminal Block

| | |
|-------|-------------|
| PIN 1 | TERRE |
| PIN 2 | NEUTRE (N-) |
| PIN 3 | PHASE (L+) |

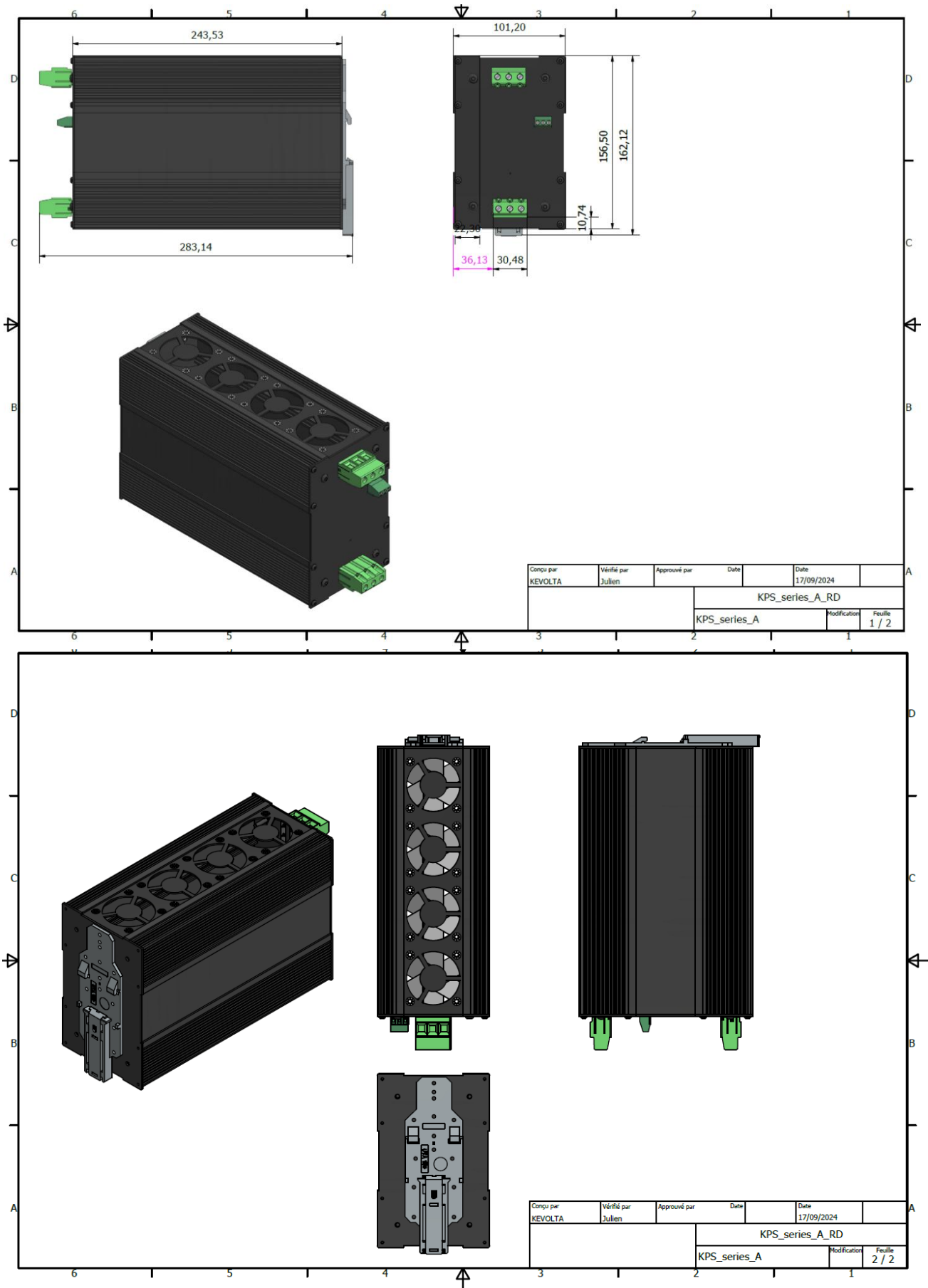
Option Relay Watchdog

| | |
|-------|------------|
| PIN 1 | NF (CLOSE) |
| PIN 2 | Commun |
| PIN 3 | NO (OPEN) |

Power Output Terminal Block

| | |
|-------|---------------|
| PIN 1 | V- (GND -) |
| PIN 2 | NC |
| PIN 3 | V+ (Positive) |

Dimensions :



Surface-mount version:

| Environnement | |
|---------------|--|
| Weight | ~3.5 à 4kg |
| Dimensions | ~102X197X Depth varies depending on the model, 120mm to 285mm) |
| Fixation | - 4 holes Recommendation : screw M6 |
| Color | Black |
| Material | Aluminium |

