

# Redundancy Module : 110Vdc, 115Vdc, 125Vdc, 127Vdc

## KMR-series 10A, 20A, 30A, 40A, 50A, 60A, 70A et 80A

### Description :

Our system allows for the parallel connection of two or three power supplies, guaranteeing maximum availability and enhanced security for your installations. Thanks to seamless redundancy, you ensure continuous service under all circumstances.

Furthermore, it offers the possibility of changing a power supply without interruption, simplifying maintenance and eliminating the risk of downtime. Increase reliability, protect your operations, and ensure business continuity.

Contact us for a personalized assessment.

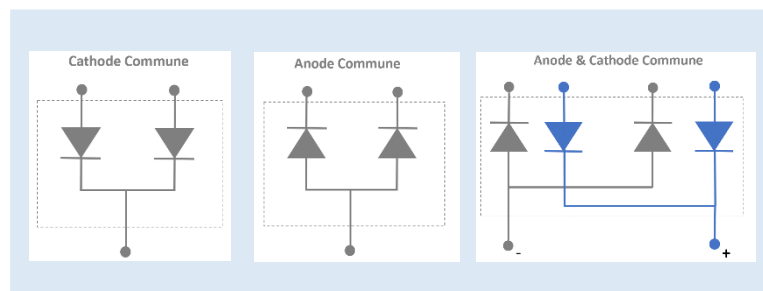


The redundancy module provides effective protection against power supply failures.

Thanks to intelligent decoupling of two power sources, the failure of one has no impact on the output: the other automatically takes over, ensuring uninterrupted service continuity.

Furthermore, the module continuously monitors both power supplies and triggers an alarm signal via a contact in the event of a loss of redundancy.

### Synoptic :



### Features :

#### Input :

-20 Vdc...280Vdc (2 or 3 Input)  
Up 20A to 80A (Ventilated or not depending on the power)

For DC versions, several mounting types are available:

Common anode  
Common cathode  
Common anode & cathode

#### Options:

- DIN rail, surface mount or table mount  
- Watchdog relay for output voltage monitoring



## Design :

Our redundancy module integrates seamlessly into your installations thanks to its robust, reliable, and field-oriented design:

- DIN rail or wall mounting for easy integration
- Fixed terminal block connectors **up to 16 mm<sup>2</sup> (10 to 50 A)**, depending on the output current, or lug connection above 50 A
- Elegant and durable black aluminum housing
- IP20 protection rating
- Excellent resistance to vibration and shock
- Low sensitivity to humidity and dust

Maximum protection and lifespan

- Fan cooling

Version Option	
KMR_CCR	Version Common Cathode
KPS_ACR	Version Common Anode
KPS_ACCR	Version Common Anode & Cathode

For safety reasons, observe the following requirements:

- Mount the unit in a protective enclosure that complies with current electrical safety regulations.
- Use cables with an adequate cross-section to connect the inputs and outputs.
- Protect the primary winding with a recommended fuse.
- Ensure the redundancy module is positioned correctly to allow for proper airflow and optimal ventilation.

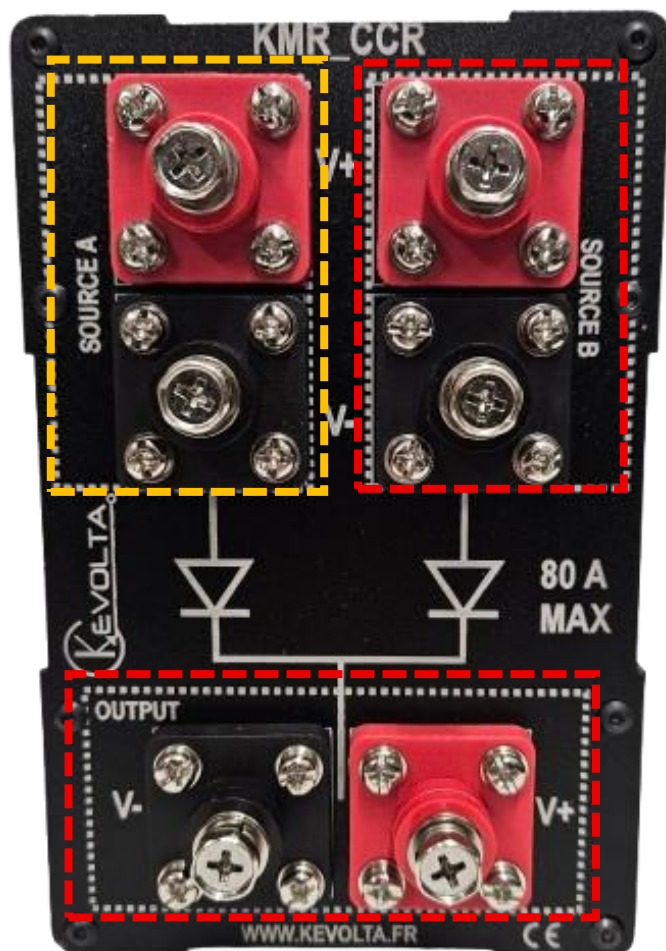
## Spécifications techniques :

KPS_series	
Voltage	20 à 280Vdc
	180...550Vac / 254 ....780Vdc
Current Version DC	20A nominal ( max 30A ) 40A nominal ( max 50A ) 80A nominal ( max 100A )
Typical output voltage	= Voltage Input - 1.6V
Overcurrent	3x I nominale for 3S
Watchdog Relay	Depending on the model and voltage used in the application

Environnement	
Weight	~0.5Kg à 2 kg
Size	(102x160x variable depth depending on the model, from 120mm to 285mm)
MTBF (+25°C)	1 200 000 H (Hors FAN)
Lifetime	>200 000H 30°C >50 000H version ventiled
Temperature storage	-40° à +85°C
Humidity (non-condensing)	~85%

Electromagnetic compatibility 2014/30/UE / Low Voltage Directive 2014/35/UE Immunity standard for industrial environments EN 61000-6-2	
ESD	EN61000-4-2
Radiated Susceptibility	EN61000-4-3
EFT/Burest	EN61000-4-4
Surge	EN61000-4-5
Conducted	EN61000-4-6
Magnetic Field	EN61000-4-8
Voltage Dips and interruptions	EN61000-4-11
EMC EMISSION	EN55011 Group1 Class A

Connections :



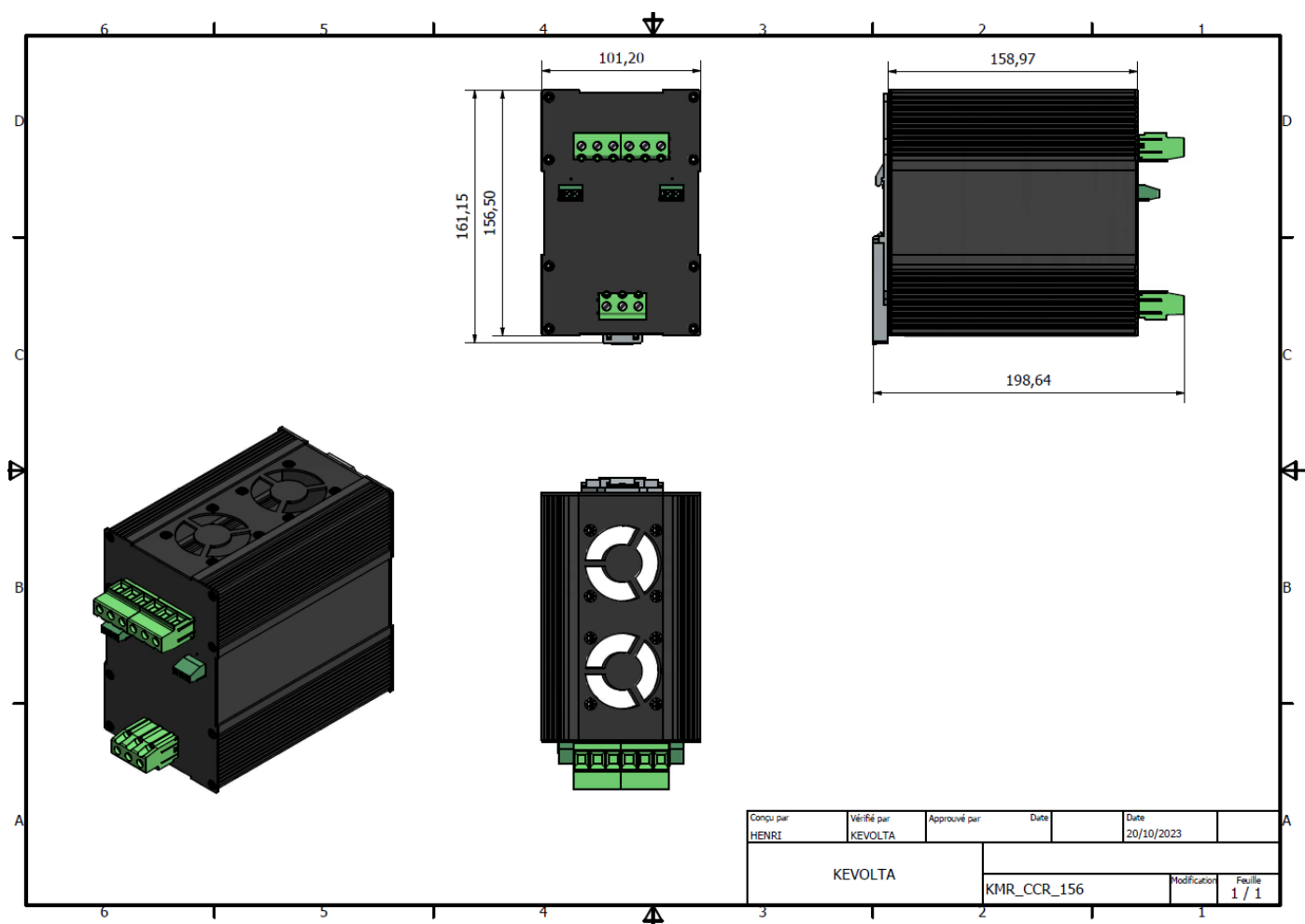
Input terminal connection	
PIN 1 SOURCE A	V+
PIN 2 SOURCE A	V-
PIN 1 SOURCE B	V+
PIN 2 SOURCE B	V-

Borne de Sortie	
PIN 1	V-
PIN 2	V+

Module de redondance  
livré avec protection des  
bornes



Size:



### Surface mount version :

Environnement	
Weight	~0.5 à 1.5kg
Size	~102x197x depending model, up 120mm to 280mm)
Fixation	- 4 holes <b>Recommendation:</b> screw M6
Color	Black
Matter	Aluminium

